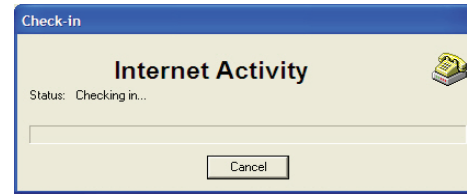


Note: You must be connected to the Internet to complete the next two steps.

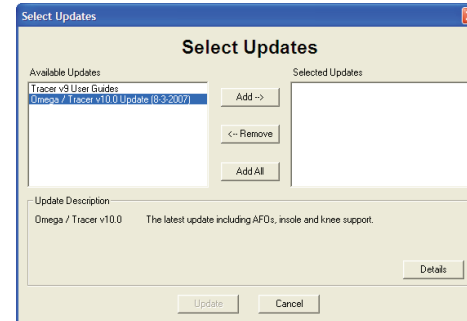
Step 7: Check In

Select **Internet > Check In** from the *Tracer* menu.



Step 8: Update Software

1. Select **Internet > Update Tracer** from the *Tracer* menu.
2. Select the oldest update you want to download and install from the list of **Available Updates** and then click on **Add**.
3. Once the desired update is displayed in the **Selected Updates** field, click on the **Update** button. Follow any instructions that are displayed during the update.
4. Repeat Steps 2-3 for each of the remaining updates, starting with the oldest and finishing with the most recent.



Step 9: Verify Scanner Operation

Select **Capture with Omega Scanner** from the **Start** screen and proceed with the shape capture process for a shape of your choosing to confirm that the Scanner is operational.



OHIO WILLOW WOOD®
free the body...free the spirit®
15441 Scioto Darby Road
Mt. Sterling, Ohio 43143 USA
Phone: 740.869.3377 or 800.848.4930
Fax: 740.869.4374 www.owwco.com



Scanner Setup Guide

**Do NOT plug in the Scanner
until you have installed the software.**

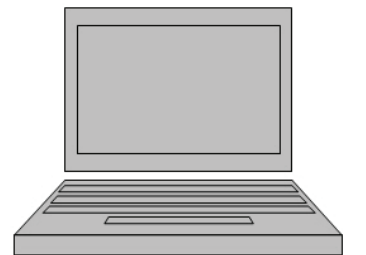
*The Scanner will **not** operate properly if you attempt to use it
prior to installing the software as described in this guide.*

Step 1: Verify Computer Requirements

Before proceeding, verify that your hardware meets the following requirements:

CPU: Core 2 Duo* (T7100) @ 1.83GHz
RAM: 1GB
Ports: 1 FireWire port (1394) *OR* CardBus slot *OR* ExpressCard slot
1 USB port
Operating System: Windows XP Pro with SP2

**or any equivalent dual-core processor*



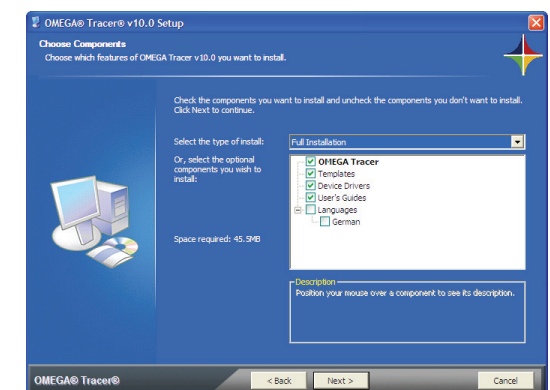
Note: if you have already installed Tracer Version 10 (or higher), proceed to Step 5.

Step 2: Install software

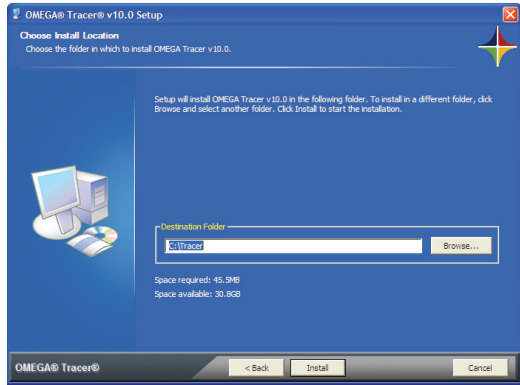
Insert the **OMEGA Tracer** CD in the CD-ROM drive to launch the Setup Wizard. Make the selections shown below:



Click **Next**.
(If this screen does not appear automatically,
go to **Start>Run>Browse** and locate the CD drive.
Select **setup.exe** and click **OK**.)



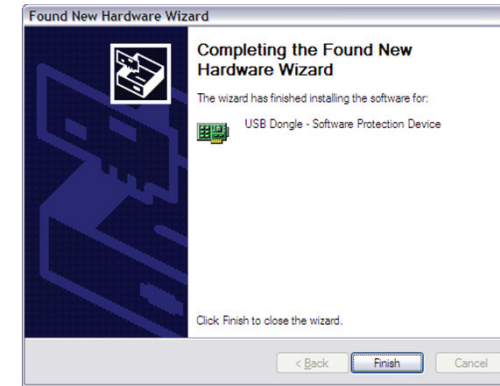
Select the components you want to install.
Click **Next**.



Click **Install**. Do not change the default location that is shown on this screen.



Click **Finish**.



Click **Finish**.

Install .NET Framework

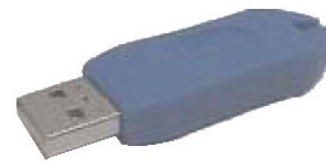
If you see a message saying that the .NET Framework has not been detected, call OMEGA Tech Support at 800-848-4930 for guidance through the following installation procedure:

1. Dismiss the message box
2. Browse to the CD and run the **dotnetfx.exe** program.
3. Click **Next** on each of the screens in the program. It may require a reboot.
4. After it is installed, try to install **Tracer** again as described above.

Step 3:

Insert Software Security Key

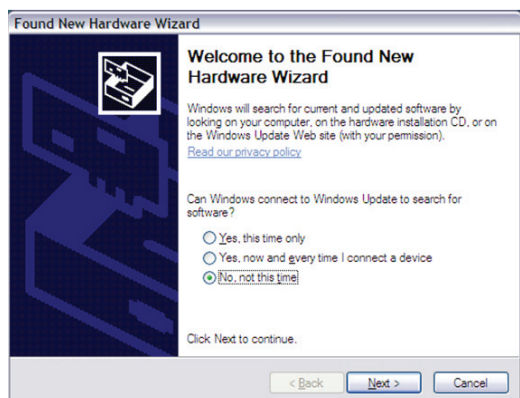
Insert the Software Security Key into a USB port in the computer.



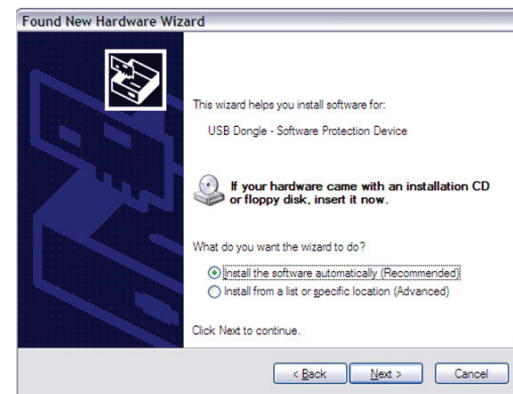
Step 4:

Install Security Key Drivers

A **New Hardware Wizard** will launch. Make the selections shown below:



Select **No, not this time** and click **Next**.



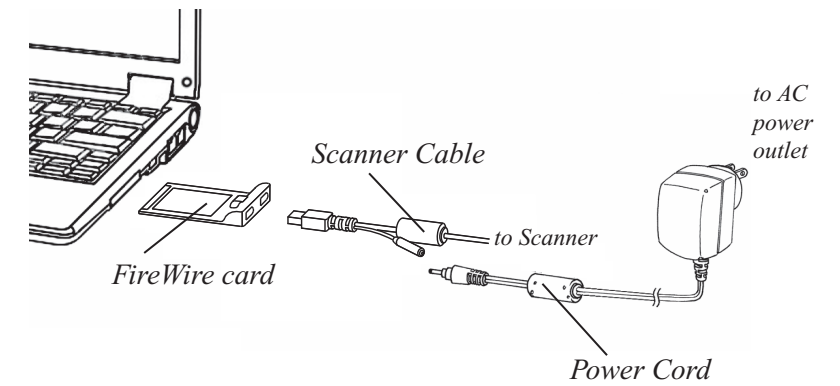
Make sure that **Install the software automatically** is selected. Click **Next**.

Step 5:

Connect the Scanner

Connect the Scanner to your computer and to a grounded wall outlet as shown at right.

When the Scanner is receiving power, the green Power light will be lit.



Step 6:

Configure the Software

Start **Tracer** by double-clicking the **Tracer** icon on the desktop.

Select **Help > Set Options** from the **Tracer** menu. Click on the **Graphics** tab. Under **Spin Type**, be sure that the **Free Form** option is selected.

For new **OMEGA Tracer** installations, refer to the full User's Guide for instructions on **Configuring the Operating System** and **Entering Facility and E-Mail Information**.

