

# LimbLogic® Components

## Distal Mount Vacuum Pump (LLV-21043\*)



\*Not sold individually. Available the following kits:  
 LLV-2000-L LimbLogic Unilateral Kit, Lamination  
 LLV-2002-L LimbLogic Bilateral Kit, Lamination  
 LLV-2000-T LimbLogic Unilateral Kit, Thermoplastic  
 LLV-2002-T LimbLogic Bilateral Kit, Thermoplastic

## Side Mount Vacuum Pump (LLV-2000-S)



## M6 X 55 mm Flat Head Capscrews, set of 4 (700-B092)



## M6 X 50 mm Flat Head Capscrews, set of 4 (700-B093)

## Poron Filter (LLV-01071)



## Proximal Sealing Gasket (LLV-01070)



## Diagnostic Disc



## Suction Pad (LLV-01100)

### Optional:

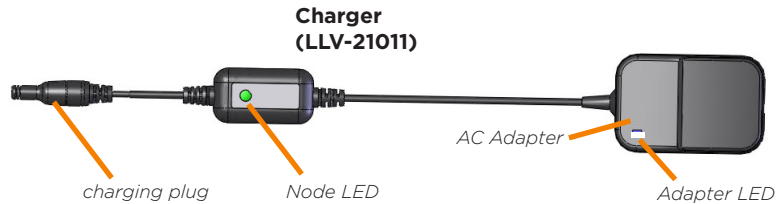


## 4-Hole Adapter 1/8" Spacer Plate (700-300)

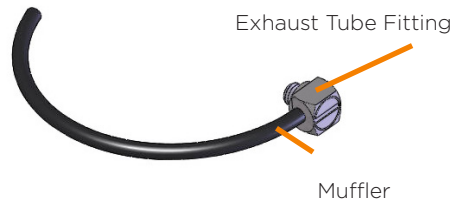
## 4-Hole Adapter 3/8" Spacer Plate (700-375)



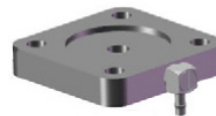
## LimbLogic Expulsion Valve (LLV-EV)



## Exhaust Tube (LLV-21080)



## 4-Hole Adapter (LLV-01041)



## Vacuum Plate (LLV-01043)

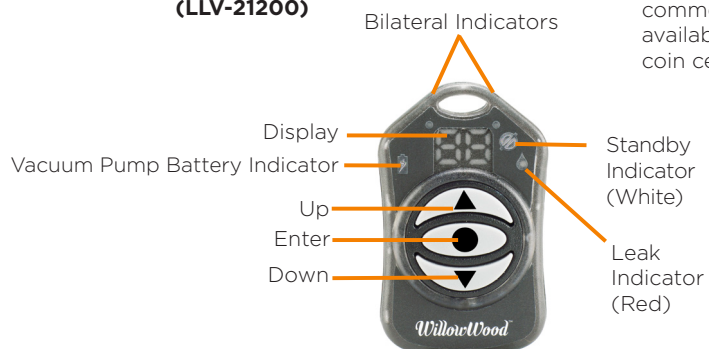


## Drop-In Adapter (LLV-02003)



## Vacuum Pyramid (LLV-01044)

## Fob (LLV-21200)

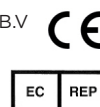


**Replacement Fob Battery:** commercially available **CR2032** coin cell battery

# WillowWood®

The Ohio Willow Wood Company  
 15441 Scioto Darby Road  
 Mt. Sterling, OH 43143  
 phone 740.869.3377 / 800.848.4930  
 fax 740.869.4374 www.willowwoodco.com

Ohio Willow Wood Company B.V.  
 Keizersgracht 62/64  
 1015 CS Amsterdam  
 The Netherlands



PN-2290-G 29 APR 2016